

proadvise GmbH

Project and schedule management since 2002

EFFICIENT – PROFESSIONAL – FLEXIBLE – SOLUTION ORIENTED

Andreas Kories | CEO

Our range of services

Overview

Project management

*Project management / controlling,
scheduling, resource planning, risk
management*

Software Development

*Interfaces, Tools &
Individual Requirements*

Training & Coaching

*Tools, Methods & Processes
(Standard & Individual)*

Consulting

*Critical Chain PM, agile PM, CPM method,
process & change management*

Tool and implementation partner

Oracle, saprima, Safran & Add on Tools

Support, operation & services

*Technical maintenance, error
analysis & bug tracking*

Specific solutions

Professional handling of situational problems



Our range of services

Your requirements become reality with us!

Project management

- ❖ Process Management
- ❖ Risk management
- ❖ Warehouse logistics
- ❖ Test / validation management
- ❖ Commissioning management
- ❖ Documentation management
- ❖ Communication management
- ❖ Software planning
- ❖ Claim management
- ❖ Change management

Consulting

- ❖ Schedule building/ consulting
- ❖ Support/ Coaching
- ❖ Process consulting & design
- ❖ PM method consulting
- ❖ Resource Management/ Analysis (RMRM)
- ❖ Consulting/ development of long-term PM strategies

Tool & implementation partner

- ❖ Evaluation of tools
- ❖ Tool consulting
- ❖ Creation of specifications
- ❖ Creation of specifications
- ❖ Implementation coordination
- ❖ Customizing and rollout

Our range of services

Your requirements become reality with us!

Support, operation & maintenance

- ❖ Operation, support and administration
- ❖ Technical & functional consulting services
- ❖ Maintenance and regular operation for PM systems, databases and operating systems
- ❖ Technical conceptual design of system environments

Training / Coaching

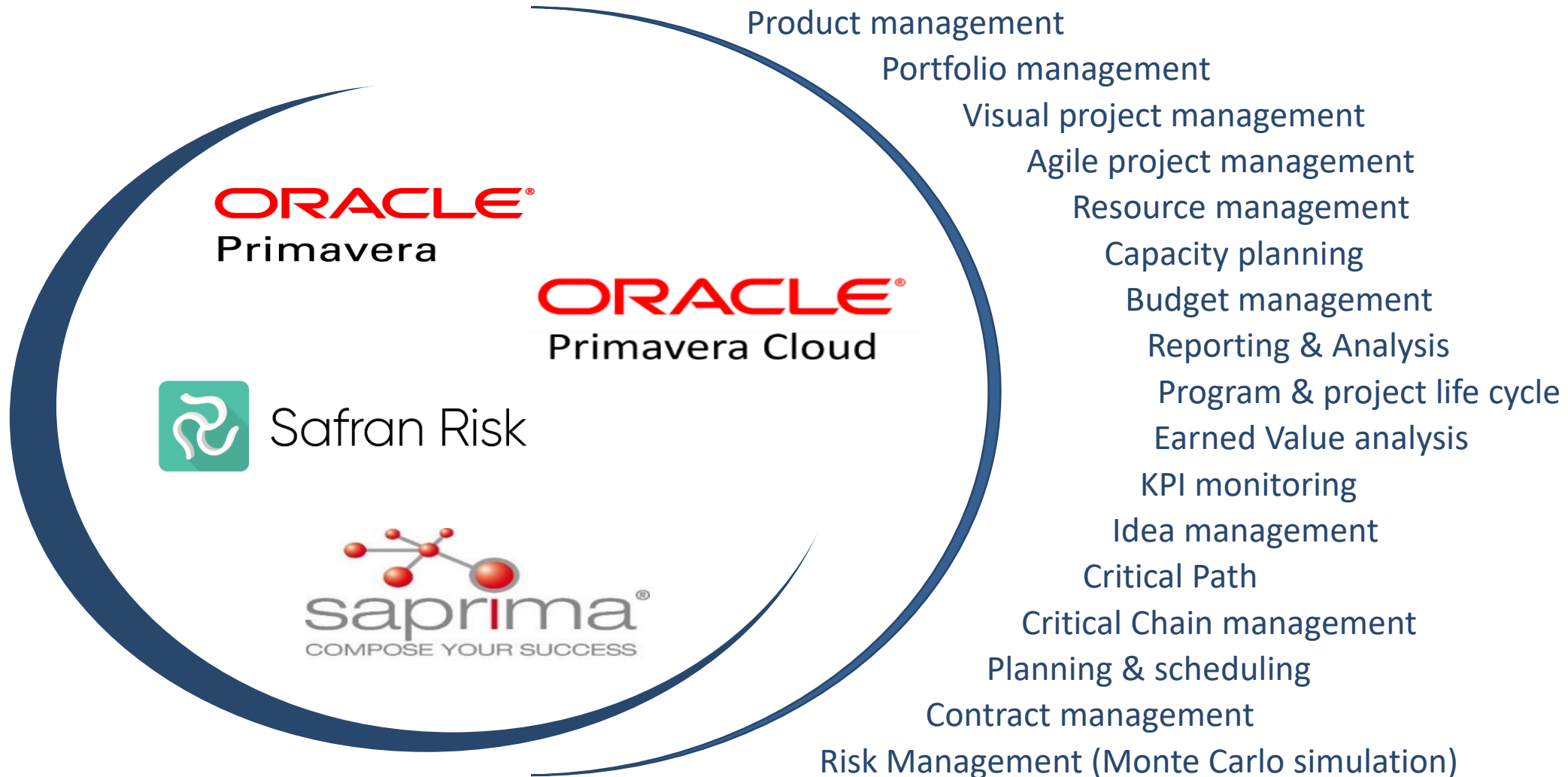
- ❖ Project management Training
- ❖ Scheduling, Resource management, Risk Analysis trainings
- ❖ PM tool trainings (e.g., Oracle Primavera P6, Oracle PRIME, MS-Project, sapprima, Sciforma)
- ❖ Team / employee and project coaching
- ❖ Individual trainings

Software development

- ❖ Integration of external systems/ Add On Tools
- ❖ Interfaces
- ❖ Development of Java and web applications
- ❖ Oracle Business Intelligence Reports for company-wide reporting
- ❖ special database scripts/ concepts

Our project management systems

The right solution for everyone!



Add on tools for Oracle Primavera

The right solution for everyone!

- ❖ Reporting
- ❖ S-Curves
- ❖ Area diagrams
- ❖ Graphical evaluation options
- ❖ Target/actual comparison
- ❖ Controlled imports of XER files into P6 EPPM
- ❖ Import & export of DB configurations
- ❖ Automatic transfer of Activity Start and Finish data into UDFs
- ❖ Data exchange via XML interface integrated in P6 EPPM
- ❖ Automated project/project copy deletion
- ❖ Offline feedback of activity information
- ❖ Import & export of configurations of a P6 database



proimporter



Our support

For you we offer an overall support!

PM systems

Implementation & tool administration

Consulting services for business and technical application issues

System design, interface support

Maintenance of application & web servers, databases

Technical upgrades, fixpacks & release changes

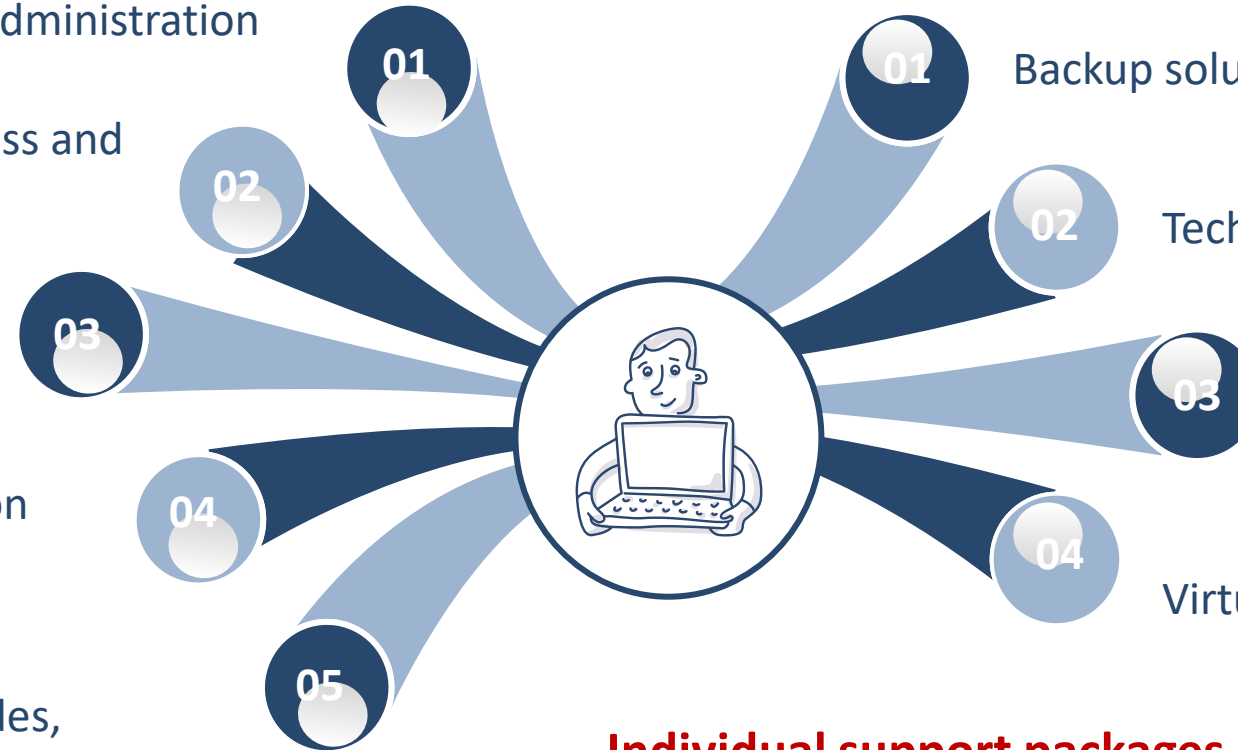
Server systems

Backup solutions

Technical Maintenance & Support

Server administration

Virtualization solutions



**Individual support packages -
tailored to your requirements!**

Individual software and interface development

Based on your requirements and wishes!

Development & Technologies

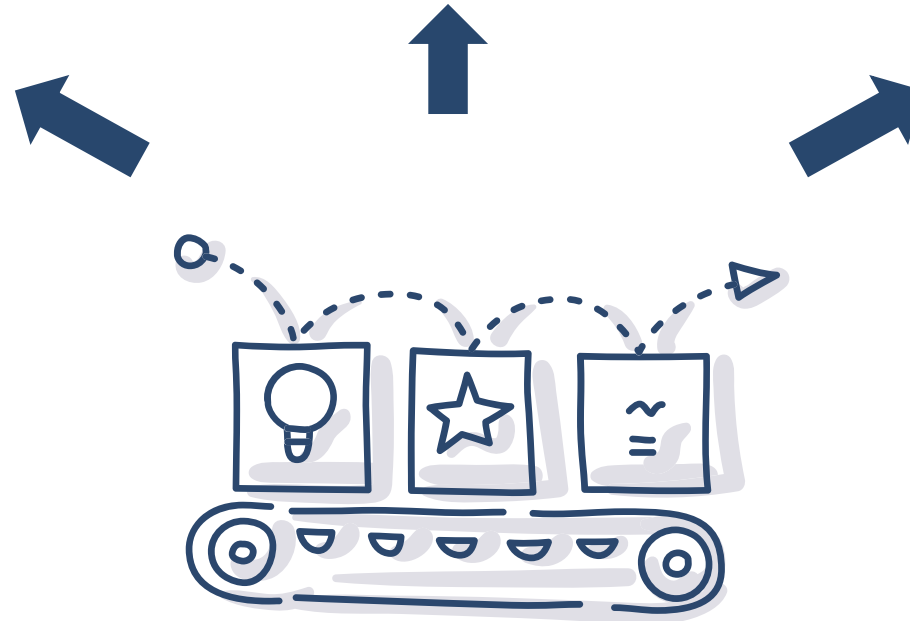
- ❖ Java and JavaEE web application development
- ❖ SQL programming/queries
- ❖ Web services
- ❖ Primavera P6 API
- ❖ BI Publisher
- ❖ Oracle ADF

System optimization

- ❖ Data exchange between systems
- ❖ Process automation
- ❖ Data cleansing
- ❖ Data validation

Dashboard & data visualisation

- ❖ Earned value analyses
- ❖ S-curves
- ❖ Milestone trend analyses (MTA)
- ❖ U.v.m



PM trainings and workshops

- ✓ Basic, Advanced, Individual and Specialist
- ✓ Practice-oriented
- ✓ Flexible
- ✓ Location-independent
- ✓ Adapted to your needs!



Practice-oriented PM trainings & workshops

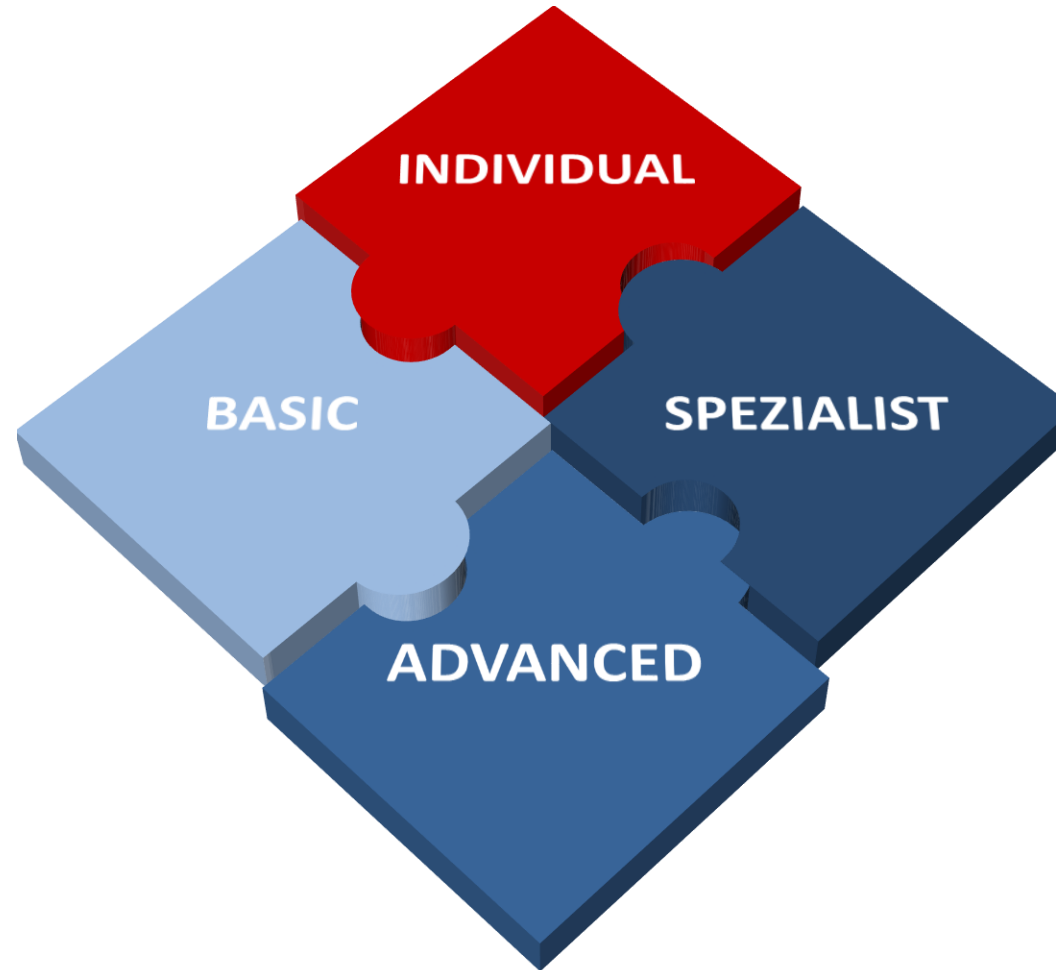
Flexible and location-independent

BASIC TRAINING

- ❖ Basics
- ❖ System/ function overview
- ❖ Training in the safe operation of the applications

ADVANCED TRAINING

- ❖ Deepening of basic knowledge
- ❖ Reporting and customized visualization



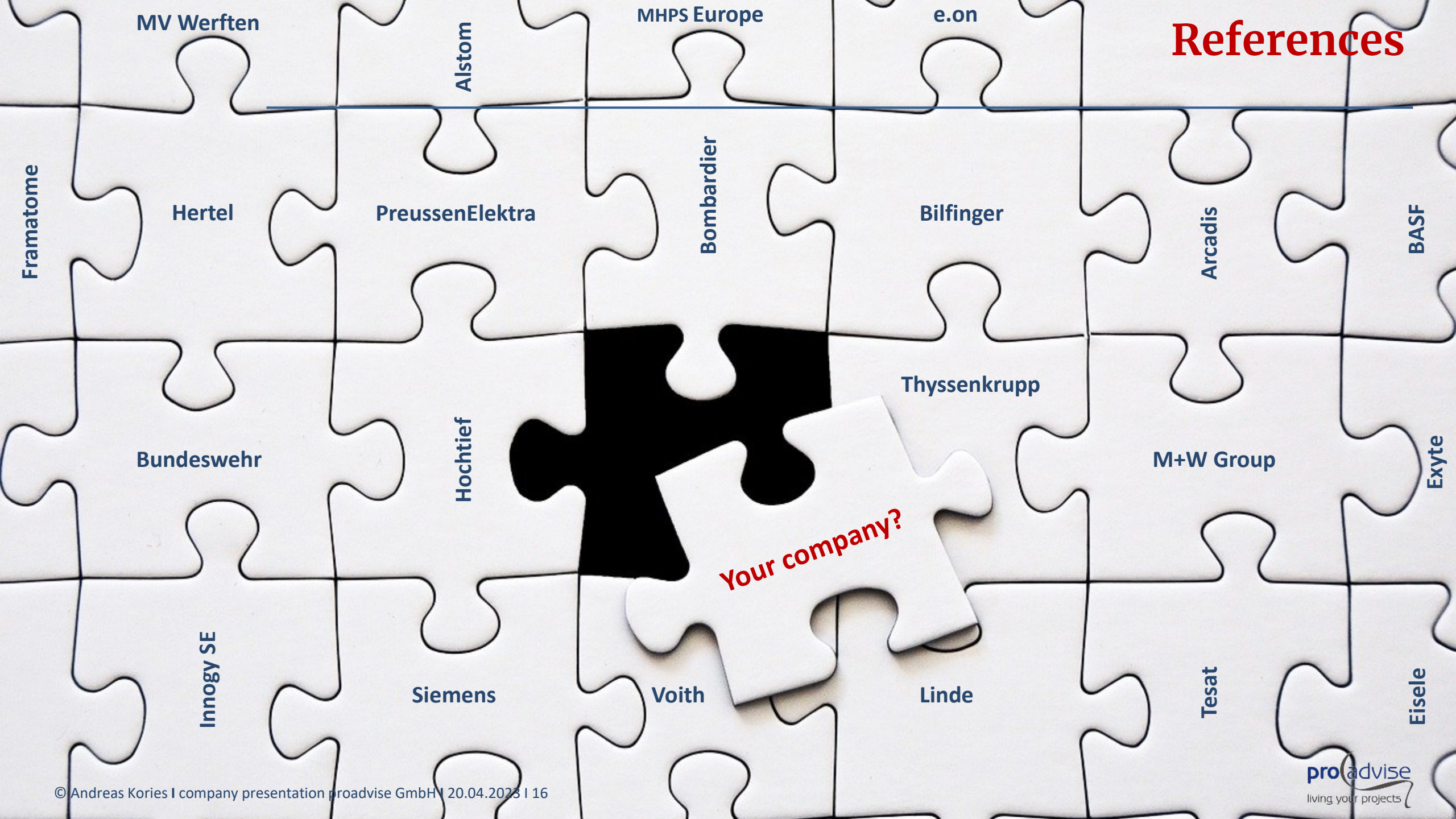
INDIVIDUAL TRAINING

- ❖ Adapted to your needs
- ❖ Contents individually elaborated

SPEZIALIST

- ❖ Customizing of processes and views in the application
- ❖ Administration

References



Further information

All about **pro**advise GmbH and our services

Homepage: <https://www.proadvise.com/en/>

LinkedIn: <https://de.linkedin.com/company/proadvise-gmbh>

XING: <https://www.xing.com/pages/proadvisegmbh>

Twitter: <https://twitter.com/proadvise>

Webcast: <http://www.proadvise.de/webcast>

YouTube: <http://www.youtube.com/proadvise>

RSS-Feeds: <http://www.proadvise.de/network>



„It's not because things are difficult that we do not dare. It's because we do not dare that they are difficult.“

Seneca



Andreas Kories



sales@proadvise.com



+49 7195 98298-0

proadvise GmbH | Brühlweg 4 | 73663 Berglen
Tel. +49 7195 98298-0 | Fax +49 7195 98298-99 | www.proadvise.com