



ALTUS

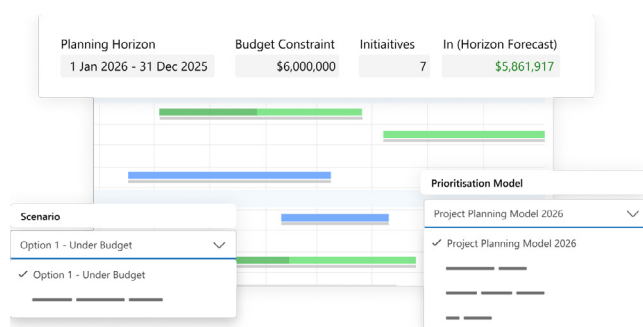
# Altus Overview

The Microsoft-native Project Portfolio Management solution for enterprise and government organisations

[altus.pro](https://altus.pro)

# Altus turns project chaos into organisational clarity

Gain organisation-wide visibility and insights with AI-enabled project delivery, embedded in your Microsoft 365 ecosystem. Your teams can move faster, align better, and deliver on the work that matters.



## Strategic portfolio management

Prioritise, evaluate, and optimise initiatives to align your projects and portfolios with what matters most to your organisation. Weighted scoring models and scenario planning enable objective comparisons focussed on strategic goal delivery.

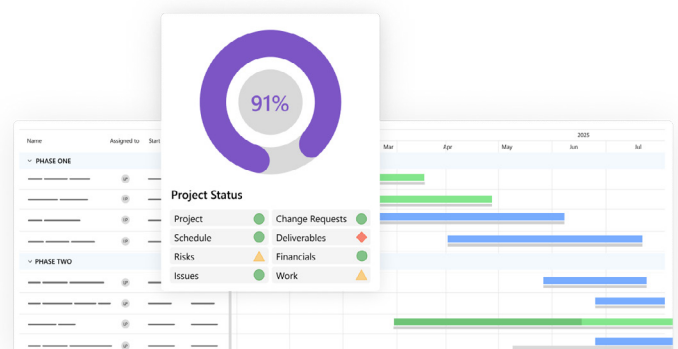
“

“Good, accurate and trustworthy information means we’re able to manage every project better and act early should anything start going awry. And that’s the way you want it.”

Director Digital Infrastructure, Mater Group

## Project portfolio management

Seamless integration with the tools your people already use to align project management across your organisation, surfacing information in one place and enabling effective oversight and decision making.





## Resource management

Manage resource capacity and forward planning with ease. Eliminate delays and bottlenecks quickly with ‘at a glance’ dashboards. Track individual and team assignments, request and approve resource allocations, monitor exceptions, workloads, and timesheets and plan for future work.

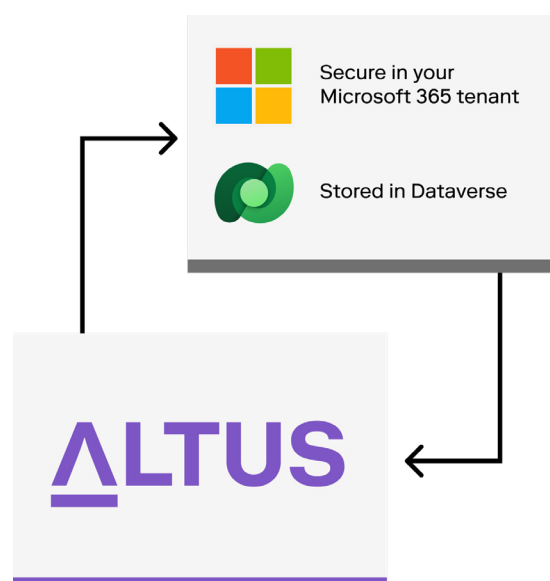
“

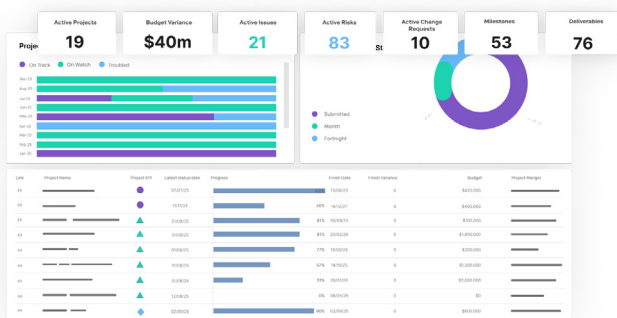
“Altus has delivered real, tangible benefits. Project visibility has improved significantly, which helps us make better decisions and allocate resources more effectively. The drop in complaints about information access shows just how engaged our teams are, they rely on Altus every day.”

Chi Keen Low, PMO Manager, UniSuper

## Built for Microsoft 365, secure in your tenant

All the benefits of cloud, without the security headaches. Altus is deployed in your Microsoft 365 tenant, with regular updates that can be deployed automatically or at time that works best for your organisation, giving your IT team full control. Best of all, Altus is Copilot-enabled, so you can realise the full power of AI without sending data outside of your environment.





## Instant insights, no setup required

Altus comes with a rich reporting pack out of the box covering projects, programs, portfolios, resources, and strategy. From drilldowns to printable status reports, you get real-time visibility across every layer of delivery, all within your Microsoft 365 environment, using Power BI.

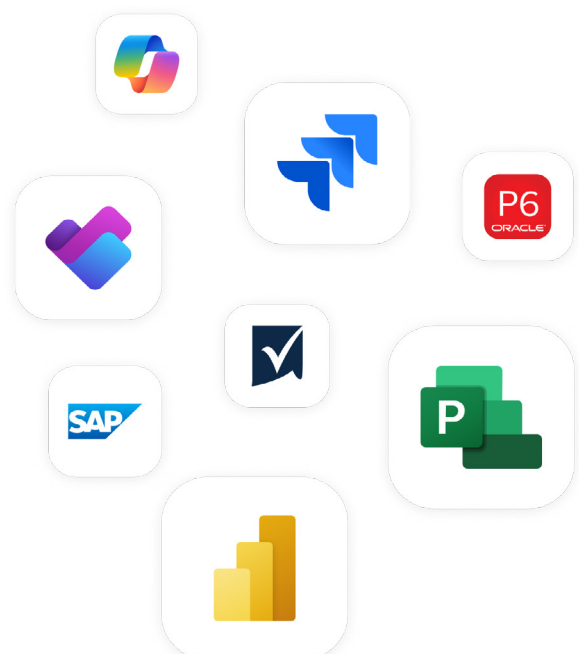
“

Altus provided a way to examine all our schedules and be able to report on them and easily pull-out gateway milestones and key milestones. This allowed us to shift our focus to overall project management rather than previously, where the focus had been on manually managing finances.”

Tim Mason, Head of PMO, Melbourne Airport

## Built to integrate, ready to lead

Altus connects with the tools you already use, from Microsoft 365 to external systems like SAP, Workday, HRIS platforms, and custom line-of-business apps. With flexible APIs, configurable dataflows, and delivery enhancements, Altus becomes your single source of truth, securely deployed in your environment and tailored to fit your enterprise.



# Why Altus?

Altus delivers immediate business value to organisations, providing an intuitive, collaborative, and adaptable platform that supports you now and grows with you into the future.



## Data security

Your data stays within your own Microsoft 365 tenant, no external hosting, and no compromises.



## Rapid deployment

Altus deploys rapidly, so your teams can start delivering value in days, not months.



## Clarity you can trust

Centralise data across teams and systems to provide insights, objectivity, and predictability at every level of delivery.



## Fully supported

Altus is a complete solution backed by expert support. Implementation, onboarding, and ongoing success are all part of the package.



## Cloud agility, IT control

Enjoy the benefits of regular updates while keeping complete control of when they are deployed to your environment.



## Partner-powered delivery

Our global partner network provides local expertise, consulting, and customisation, so Altus fits your organisation, not the other way around.



## AI-powered productivity

With Copilot and intelligent automation, Altus eliminates admin and helps teams focus on what matters.

Trusted by  
over 200+  
organisations  
globally







## About Altus

Altus is a recognised leader in enterprise project and portfolio management, trusted across government, education, utilities, financial services, and manufacturing. Founded in Australia in 2009, Altus has grown through a strong global partner network that delivers local expertise and enterprise-grade solutions at scale.

Our collaborative ecosystem spans implementation partners, technology integrators, and strategic advisors, ensuring every Altus deployment is tailored, supported, and future-ready. Whether you're in Sydney, Stuttgart, or Seattle, Altus brings deep delivery experience and a proven track record of helping organisations align work to strategy and deliver with confidence.

## Trusted by global enterprise



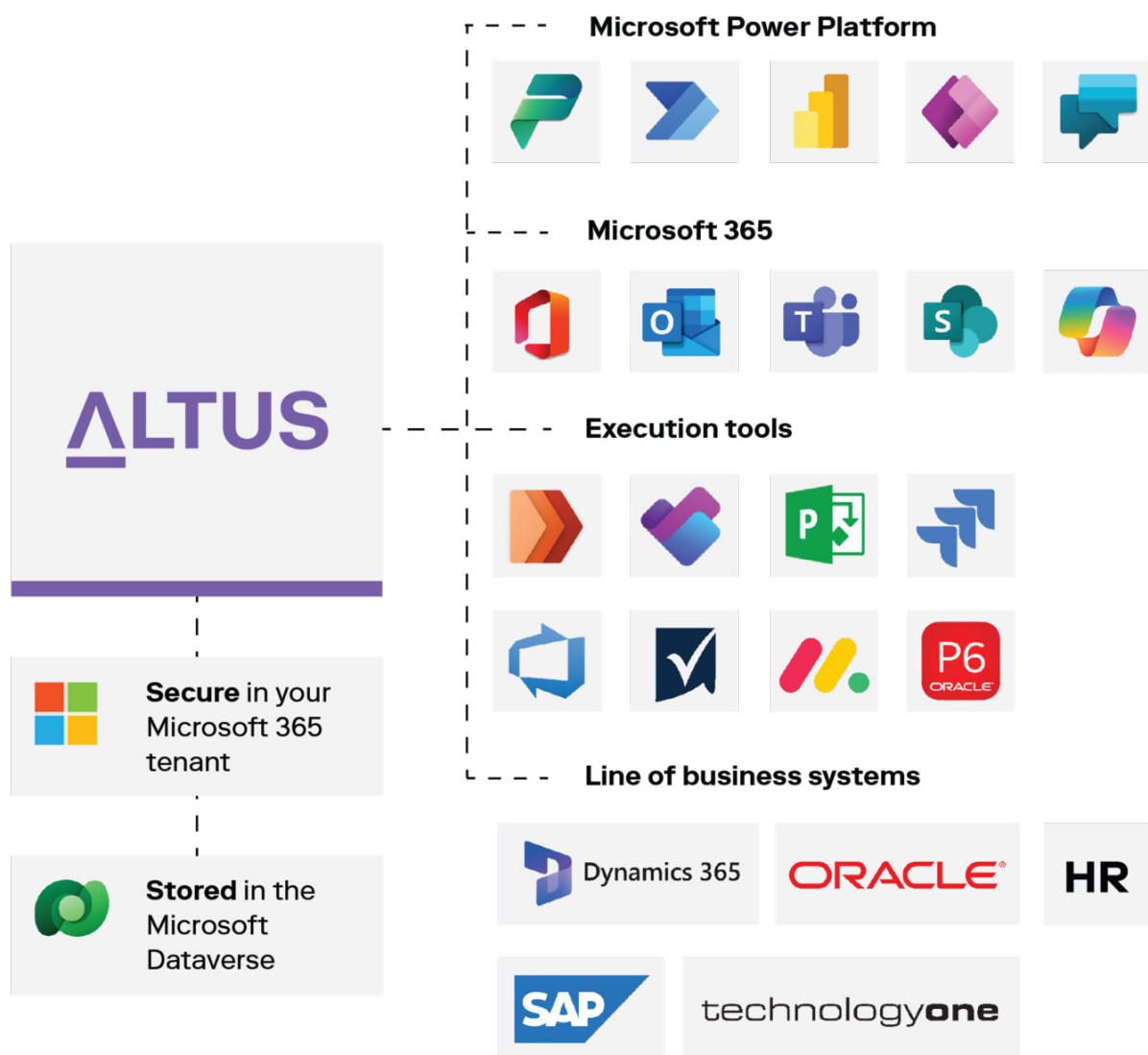
GLENCORE



# Integrations that work where you do

Altus connects seamlessly with the platforms your teams already rely on; Microsoft Project, Planner, Teams, Power BI, Jira, DevOps, Dynamics, and more. Out-of-the-box templates make it easy to unify data across your ecosystem, while flexible APIs and configuration options allow Altus to integrate with your unique line-of-business systems, from finance and HR to asset management and beyond.

Whether you're consolidating schedules, syncing documents, or automating workflows, Altus becomes your single source of truth, bringing clarity, consistency, and control to every layer of delivery.



# Built to grow with you

Altus is designed to scale with your organisation's evolving needs. Whether you're just starting out with project coordination or managing complex portfolios aligned to strategic goals, our tiered approach ensures you only pay for the capabilities you need, when you need them.

## Project

For organisations managing projects of varying sizes and complexities, and teams that need to collaborate.

Information workers  
Citizen project managers  
Professional project managers

Includes 10 super user licenses

- ✓ Task management
- ✓ Project management
- ✓ Schedule management
- ✓ Reports & dashboards
- ✓ Unlimited environments
- ✓ Integration templates

## Portfolio

For organisations that manage programs, portfolios, resources, and PMO's.

Enterprise PMO  
Program manager  
Portfolio manager  
Department manager

Includes 10 super user licenses

- ✓ **Everything in Project**
- ✓ Project management
- ✓ Project management
- ✓ Timesheet management
- ✓ Resource management
- ✓ Resource plans

## Strategy

For organisations wanting to align and prioritise initiative with their strategic goals.

Executive leadership  
Senior manager  
Strategy manager

Includes 10 super user licenses

- ✓ **Everything in Portfolio**
- ✓ Strategic goal tracking
- ✓ Project prioritisation
- ✓ Benefit realisation management



# Tier features and capabilities

## Project

## Portfolio

## Strategy

### General features

Native integration with Microsoft Teams – collaborate on projects, invite external parties, and manage project documentation



Integrated help – learn how to use Altus through our in-built training videos and guides



Comprehensive data aggregation – bring all your project information together in the Dataverse, no matter where it lives



Fully customisable business processes – leverage Microsoft's Power Platform to model processes to your exact requirements



Powerful reporting engine – native Power BI integration provides best-in-class reporting capabilities



### Personal work management

Task management - view and action tasks, deliverables, risks, changes, issues, lessons, and decisions, all in one location, across all projects



Gain insights into personal work through comprehensive reporting



Timesheets – track and report on personal work through our integrated timesheet module



## Project leadership

Native Project schedule management – use our in-built Altus scheduler to manage your projects



Integrate with the scheduling tool of your choice

*Get in touch to find out how the task management tools you are using can be connected to Altus*



Project RAID management – capture, track, and manage Risks, Assumptions, Issues, and Decisions



Stay in control with customisable Change Approval workflows



Save time through smart, automated Project Status reporting



Comprehensive project finance management – create budgets, forecasts, and track actuals across customisable cost categories



Project resource management – view, request, and assign project resources based on availability and skillset to build detailed resource plans



Gain insights through powerful in-built project reporting



Manage all styles of projects, from agile to waterfall, while maintaining overall visibility



Easily manage project actuals through our integrated timesheet module



## Innovation management

Create and track Ideas and Challenges



Quickly identify the most promising Ideas and Challenges through insightful dashboards



Build detailed project proposals covering resource requirements, projected costs, return on investment, and anticipated benefits



Get the most out of your portfolio by submitting, reviewing, and approving the most beneficial proposals



## Program and portfolio leadership

Gain full visibility across all projects in your portfolios and programs



Stay on top of program and portfolio finances, resource demand, and schedules, through powerful and customisable analytics reports



Program and Portfolio RAID management – capture, track, and manage Risks, Assumptions, Issues, and Decisions



Identify and track key dates across Programs and Portfolios



Monitor work and exceptions across portfolios, programs, and projects



## Enterprise resource management

Manage all resource requests, assignments, and workloads across all projects in one location

Track resource coverage across all work through customisable analytics dashboards and reports



Balance resource workload and avoid bottlenecks



Track, review, and approve actuals across all projects through our integrated timesheet module



Forecast future resource requirements through powerful reporting



## Strategy & benefit realisation

Manage strategic themes, goals, and benefits across your entire portfolio

Track strategic impact through industry-standard Benefit Realisation Management (BRM)



Optimise portfolios against strategic objectives



Track the progress towards your Strategic Goals through customisable key performance metrics





# ALTUS

## GET IN TOUCH



[www.altus.pro](http://www.altus.pro)



[letschat@altus.pro](mailto:letschat@altus.pro)



1300 736 734